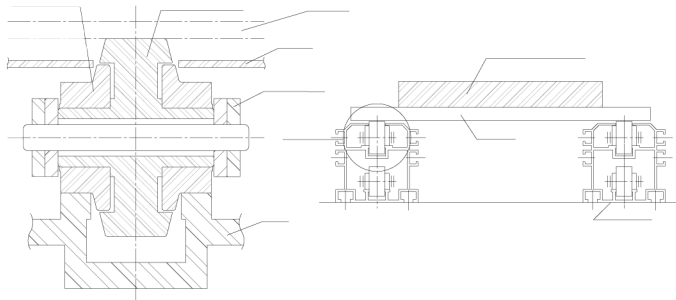


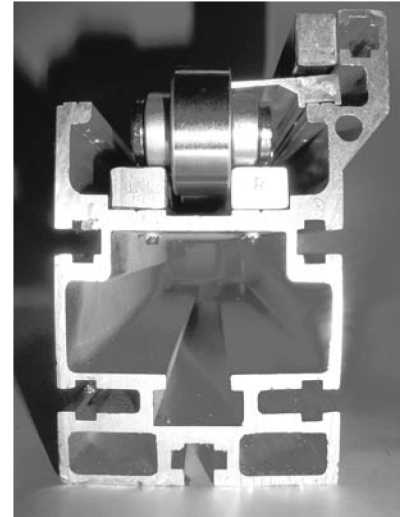


Double plus Chain

Double Plus Chain (also called Triple Speed chains) are used typically on accumulating assembly line conveyors. This chain's two rollers rotate identically according to the frictional force between the large and small rollers. Items are conveyed at 2.5 times the chain speed according to the ratio of the roller's outer diameter. In addition, when braking forces are applied, slip occurs between the large and small rollers, making the chain to be conveyed freely. Double Plus Chain are available with 'snap covers' to keep particles out, in resin rollers and with protective coatings (nickel, chromium plating).



Construction of Double Plus Chain



Advantages of Double Plus Chain

- High speed conveying
- Quite
- Improved stability
- Quick start up : through standardized guide rails and sprockets

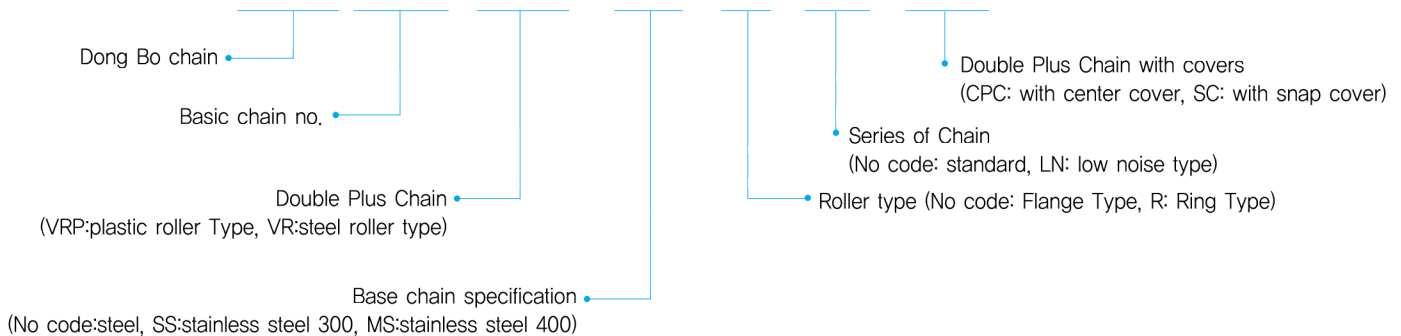
Variations

- Standard Type
- Low Noise Type
- Double Plus Chain with Snap Cover
- Double Plus Chain with Center Cover



Designation of Double Plus Chain

DBC 2040 VRP - SS - R - LN -CPC



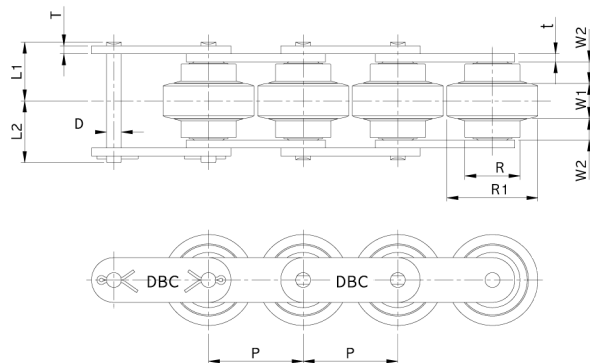
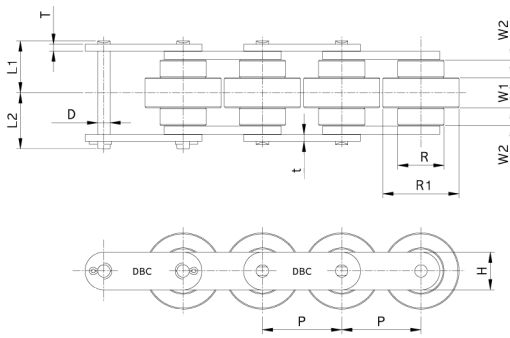


Standard Double plus Chain

Standard Double plus Chain

Ring Type

Flange Type



unit : mm

Dong Bo Chain No.	Pitch P	Roller		Width		Plate			Pin			Approx.Weight (kg/m)		Link/unit
		R	R1	W1	W2	t	T	H	D	L1	L2	VRP	VR	SSR*
DBC 2040VRP* 2040VR*	25.4	15.88	24.6	10.3	5.7	2.0	1.5	12.0	3.97	15.65	17.85	1.0	2.5	150
DBC 2050VRP 2050VR	31.75	19.05	30.6	13.0	7.1	2.4	2.0	15.0	5.08	19.5	21.0	1.4	3.7	120
DBC 2060VRP 2060VR	38.1	22.23	36.6	14.5	8.5	4.0	3.2	18.1	5.96	24.9	26.9	2.3	5.9	100
DBC 2080VRP 2080VR	50.80	28.58	48.0	20.0	15.0	4.0	4.0	24.1	7.93	35.8	36.9	4.2	10.5	74

* VRP = Double plus chain with plastic roller VR= Double plus chain with steel roller
 Note) Ring Type roller will be provided for 2040 & 2050 VRP/VR

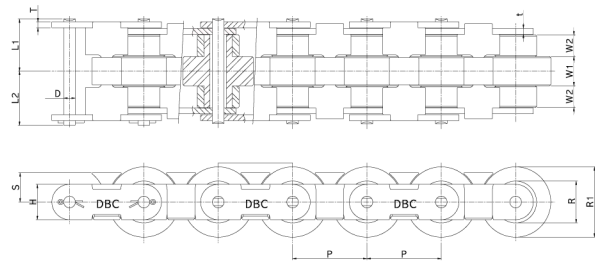
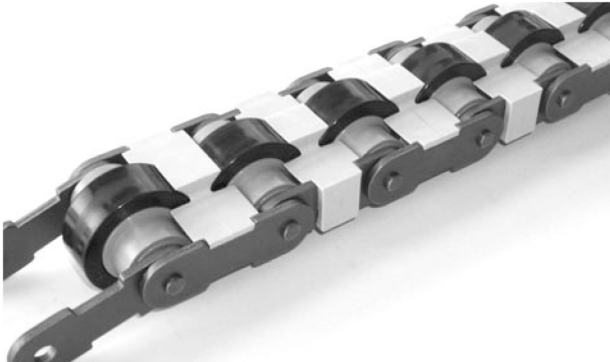
chain with steel roller and Flange Type for 2060 and larger.

Double plus Chain

Double plus Chain with Snap Cover

This chain is specially designed for preventing jamming caused falling into the conveyor lines.

by parts (like nuts and bolts etc.)



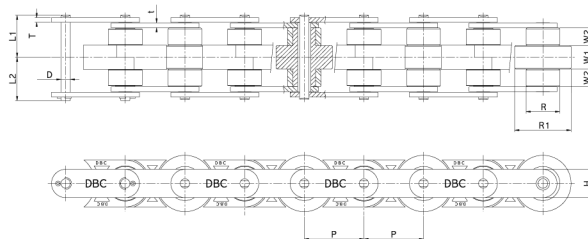
unit : mm

Dong Bo Chain No.	Pitch P	Roller		Width		Plate			Pin			Approx. Weight (kg/m)		Link/unit
		R	R1	W1	W2	t	T	H	D	L1	L2	VRP	VR	
DBC 2060 VRP-SC* DBC 2060 VR-SC*	38.1	22.23	36.6	14.5	8.5	4.0	3.2	18.1	5.96	24.9	26.9	2.3	5.9	100
DBC 2080 VRP-SC DBC 2080 VR-SC	50.80	28.58	48.0	20.0	15.0	4.0	4.0	24.1	7.93	35.8	36.9	4.2	10.5	74

*VRP = Double plus chain with plastic roller, VR = Double plus

chain with steel roller

Double plus Chain with Center Cover



unit : mm

Dong Bo Chain No.	Pitch P	Roller		Width		Plate			Pin			Approx. Weight (kg/m)	Link/unit
		R	R1	W1	W2	t	T	H	D	L1	L2		
DBC 2060 VR-CPC	38.1	22.23	36.6	15.5	8.0	3.2	3.2	18.1	5.96	24.9	26.9	5.0	100
DBC 2080 VR-CPC	50.80	28.58	48.0	20.0	15.0	4.0	4.0	24.1	7.93	35.8	36.9	9.2	74