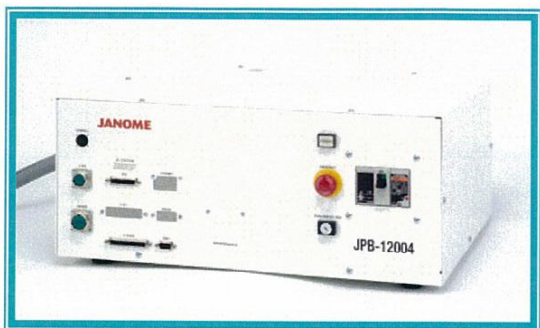
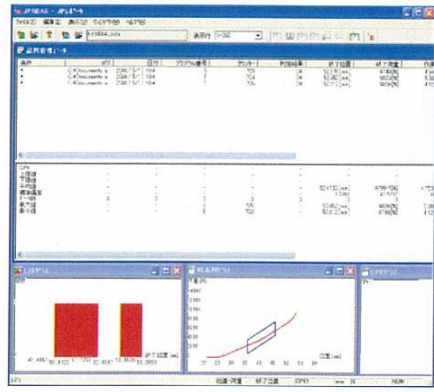


New

New 120 kN Unit Type from JP Series 4 Electro Press JPU-12004



The new 120 kN Electro Press, **JPU-12004** is now available!
It comes with all the great features of JP series 4:
User-Friendliness, High Performance, and Ensured Safety.



Main Features:

- Safe, energy-saving, and clean
- High precision and high function
- Varied pressing functions
- Enhanced quality control
- Wide LCD display for easy operation
- Self-diagnosis function

Using the PC software, you can easily display the list of quality control data retrieved by the JP Sampler, calculate statistics values such as average and standard deviation and the process capability index, or make a report.

□ Specifications

Item		Model	JPU-12004
Pressing Capacity	Maximum		120 kN (12000 kgf)
	Allowable Range		1.2-120 kN
	Increment		10 N (0.1 kgf)
	Minimum Sensing Unit		240 N
Ram Stroke	Maximum		200 mm
	Allowable Range		0-200 mm
	Setting Unit		0.001 mm
Ram Speed	Approach/Ascending (Max.)		200 mm/sec (Default: 150 mm/sec)
	Pressing		0.01-35 mm
	Setting Unit		0.01 mm/sec
Holding Time	Maximum		999.9 sec
	Allowable Range		0-999.9 sec
	Setting Unit		0.1 sec
Repeatability			±0.005 mm
Load Sensing Range			12-120 kN
Stop Mode & Control Function (Quality Control)	Constant Speed-Position Stop mode	(1)	Load control at end of pressing
		(2)	Load control within sensor range
		(3)	Load control (peak, top, bottom, valley, peak to peak, differential) within sensor range
	Constant Speed-Load Stop mode	(1)	Position control at end of pressing
		(2)	Load control within sensor range
		(3)	Load control (peak, top, bottom, valley, peak to peak, differential) within sensor range
	Constant Load-Time Stop mode	(1)	Position control at end of pressing
		(2)	Speed control within sensor range
		(3)	Speed control (peak, top, bottom, valley, peak to peak, differential) within sensor range
	Constant Load-Position Stop mode (including Distance Drive)	(1)	Time control at end of pressing
		(2)	Speed control within sensor range
		(3)	Speed control (peak, top, bottom, valley, peak to peak, differential) within sensor range
Screen Display	Unit of Measure / Pressure		N, kgf, Lbf mm, inch
	Display Language		Japanese, English, Italian, Spanish, French, German, Korean, Chinese
Memory Capacity/ life			100 Programs/ Semi permanent (when using Flash memory IC)
External Interface			RS-232C 1ch (PC can be connected to control the press using optional software.)
Number of External I/O Terminals			17 inputs and 16 outputs
Driving and Control Method			AC servomotor driven by 32-bit CPU
Power Supply (Three-Phase only)			180-250V 11kW
Working Ambience			Ambient Temperature: 0-40°C Relative Humidity: 20-90% (Non Condensing)
Size & Weight (W x D x H)	Body		290 W x 935 D x 580 H (mm) / 300 kg
	Control Box		550 W x 550 D x 256 H (mm) / 45 kg

□ Note

- Load display accuracy is ±1% within the above ranges, over 10% of the maximum pressure capacity. (Check the load value and calibration amount periodically.)
- Maximum approach and ascending speed will vary depending on conditions.
- Holding time becomes shorter as load increases.
- Repeatability is guaranteed only in the case that the machine body remains at a constant temperature. (The ±0.005mm value is achieved with a constant temperature.)

* Specifications may be modified without prior notice to improve product quality.

JANOME

Janome Sewing Machine Co., Ltd.

Industrial Equipment Sales Division

1463 Hazama-machi, Hachioji-shi, Tokyo 193-0941 JAPAN

Tel: +81 426 61 6301 Fax: +81 426 61 6302

Email: j-industry@gm.janome.co.jp

URL: <http://www.janome.co.jp/industrial.html>



**PENTACO
AUTOMATION**

PENTACO AUTOMATION PVT LTD
Pune – 411014, INDIA

+91 9921 276276 / 8408 980 980
vivek.joshi@pentacoautomation.com
www.pentacoautomation.com