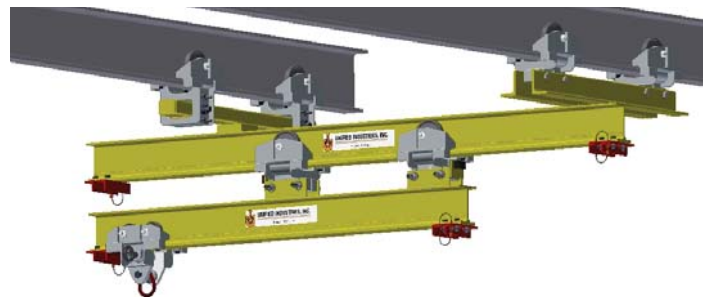
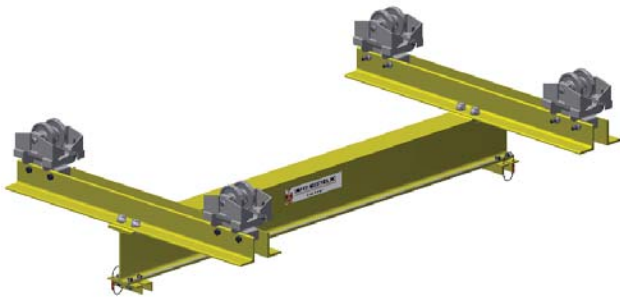




UNIFIED INDUSTRIES, INC.

A Columbus McKinnon Company

MANUAL BRIDGE CRANES



Custom bridge cranes for special applications...to your specifications

Low headroom bridge crane

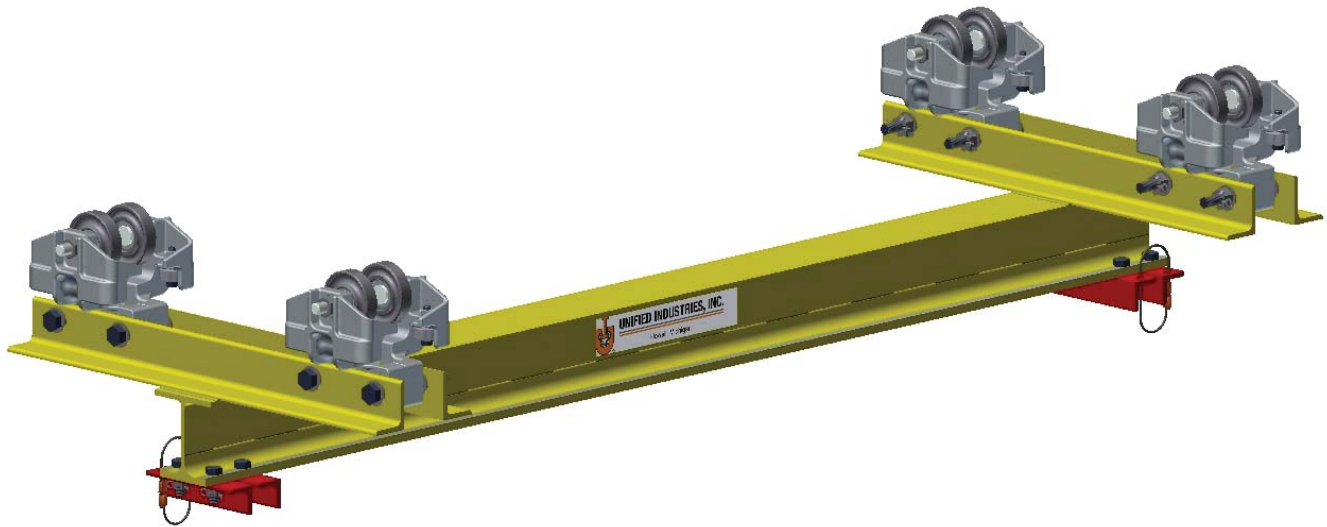
- For extremely low headroom conditions
- Bridge beam operates with a better under clearance

Dual beam bridge crane for suspension of large fixtures that move parallel to an assembly line for a balanced suspended load condition.



	PAGE
Custom Bridge Cranes	1-2
Light load Bridge Cranes.....	3-4
Medium Load Bridge Cranes.....	5-6
Overhanging Bridge Cranes	7-8
Heavy Load Bridge Cranes.....	9-10
Telescoping Unit Light/Medium Duty	11-12
Telescoping Unit Standard Duty.....	13-14
Telescoping Unit Heavy Duty.....	15-16
Custom Combination Unit.....	17-18

***All dimensions are reference only
and need to be verified with factory.**



Application

Unified light load bridge cranes are designed for the suspension of portable spotwelding guns, power tools, balancers, hoists, fixtures etc., and other light loads not exceeding 1000 lbs. (454kg).

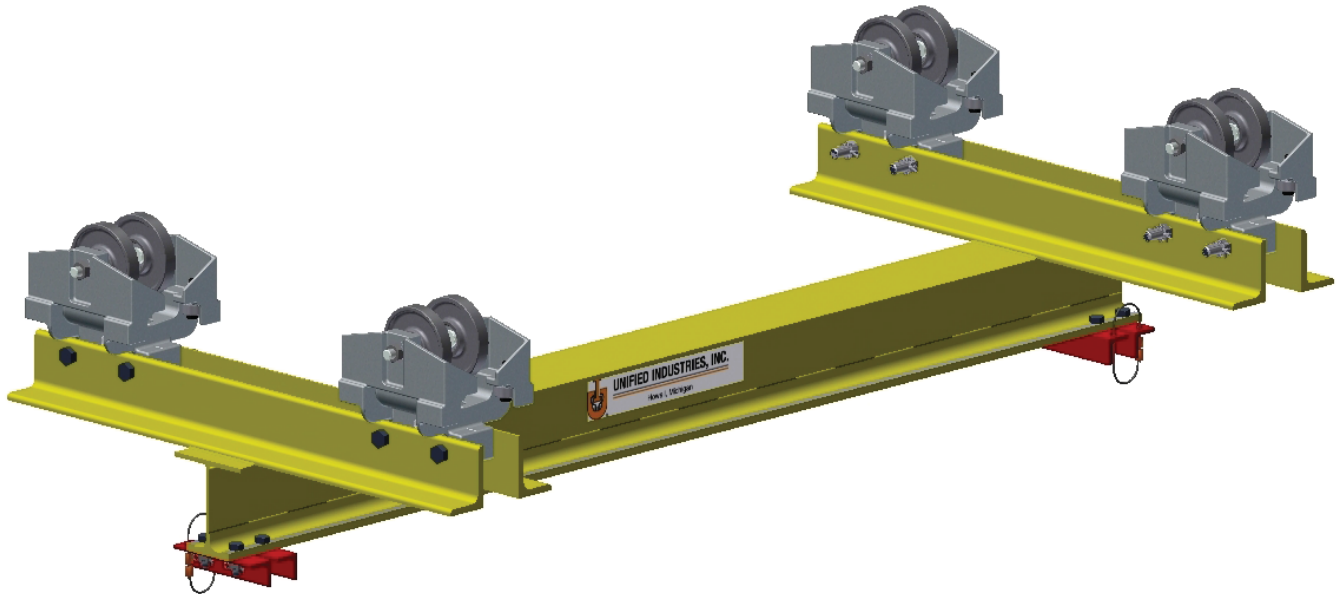
Specifications

Unified light load bridge cranes consist of two end truck assemblies, mounted with either MBC-500, SAC-500 or AC-500 trolleys, supporting a bridge beam. The bridge beam is a compound section with a hardened and ground flat track 3.25" in width. (See trolley section for trolley specifications).

End trucks are mounted with trolleys for operation on either flat rail or S-Beam. End stops bolted to each end of the bridge complete the assembly.

Options

- Bridge beam overhang to your specifications
- Counter thrust wheels or trolleys are available to prevent "kick-up" action when suspended load must be extended beyond bridge span
- Standard redundant end stops



Application

Unified medium load bridge cranes are designed for the suspension of portable spot-welding guns, power tools, balancers, hoists, fixtures etc., and other medium loads not exceeding 3000 lbs. (1360kg)

Specifications

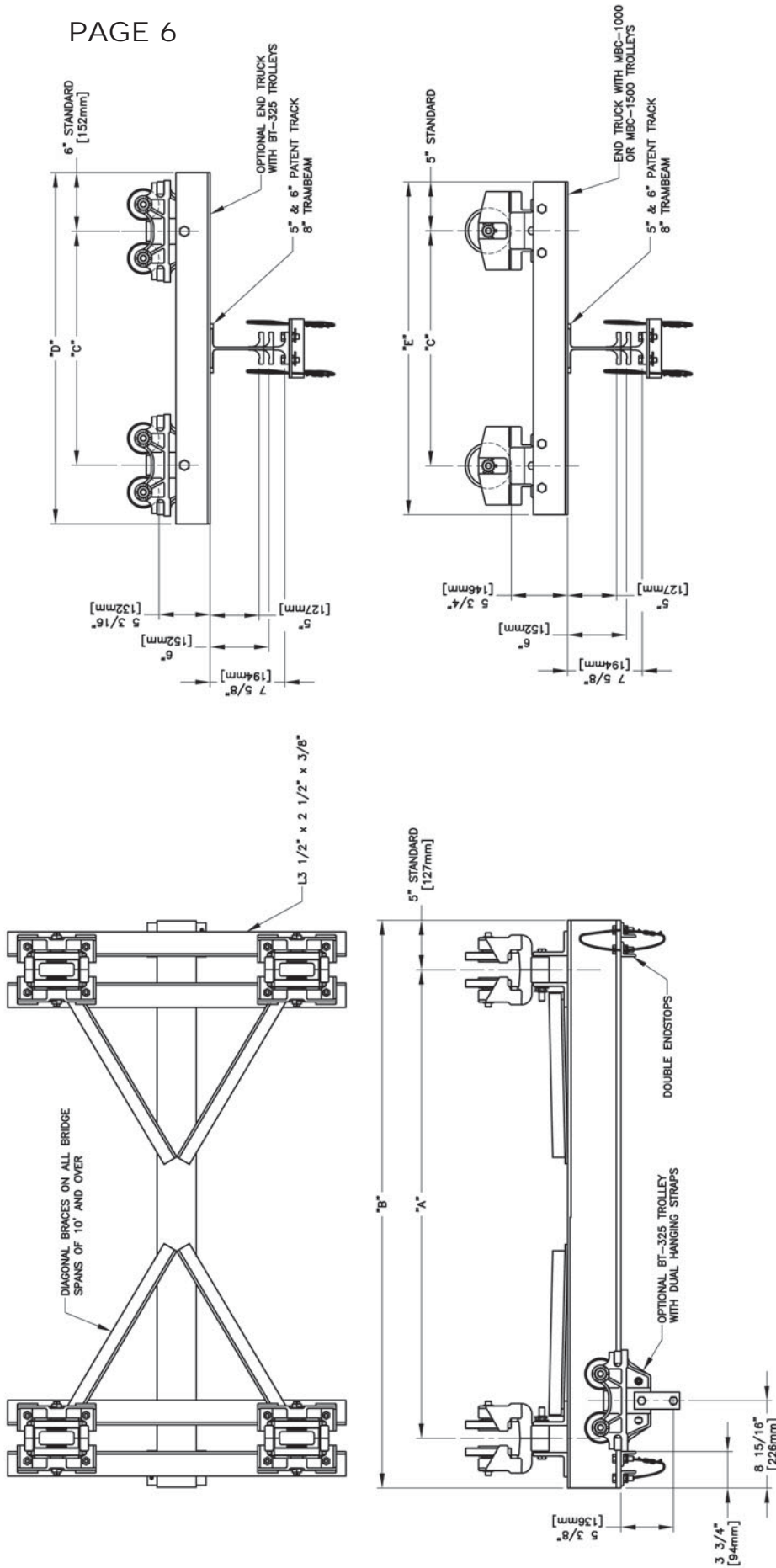
Unified medium load bridge cranes consist of two end truck assemblies, mounted with either BT-325 or MBC-1000 trolleys, supporting a bridge beam. The bridge beam is a compound section with a hardened and ground flat track 3.25" in width. (See trolley section for trolley specifications).

End trucks are mounted with trolleys for operation on either flat rail or S-Beam. End stops bolted to each end of the bridge complete the assembly.

Spans of 10 ft (3m) or more have diagonal bracing from bridge beam to end trucks.

Options

- Bridge beam overhang to your specifications
- Counter thrust wheels or trolleys are available to prevent "kick-up" action when suspended load must be extended beyond bridge span
- Bridge crane spans 10 feet (3m) to 15 feet (4.6m) will be furnished with 6" compound section bridge beam flat flange 3.25" in width
- Bridge crane spans 16 ft. (4.9m) to 20 (6m) feet will be furnished with 8" Trambeam bridge beam flat flange 3.25" in width
- Standard redundant end stops



⊗ WT.
 FOR BRIDGE CRANE ASSEMBLY INCLUDING END TRUCK TROLLEYS THIS DOES NOT INCLUDE LOAD SUSPENSION TROLLEY.
 NOTES:
 (1) BRIDGE BEAMS OVER 12 FT. [3657.6 mm] SPANS WILL BE FURNISHED WITH 6\"/>

BRIDGE BEAM	BRIDGE		BT-325 END TRUCK (STANDARD)		MBC-1000 OR MBC-1500 END TRUCKS (OPTIONAL)		RATED LOAD		COMPLETE	
	SPAN "A"	OVERALL "B"	WHEEL BASE "C"	OVERALL "D"	WHEEL BASE "C"	OVERALL "E"	lbs.	Kg.	lbs.	Kg.
5' BRIDGE BEAM	3'-0" [914mm]	3'-10" [1168mm]	1'-6" [457mm]	2'-6" [762mm]	1'-6" [457mm]	2'-4" [711mm]	3000	1361	143	65
	4'-0" [1219mm]	4'-10" [1473mm]	2'-0" [610mm]	3'-0" [914mm]	2'-0" [610mm]	2'-10" [664mm]	3000	1361	158	72
	5'-0" [1524mm]	5'-10" [1778mm]	2'-6" [762mm]	3'-6" [1067mm]	2'-6" [762mm]	3'-4" [1016mm]	3000	1361	174	79
	6'-0" [1829mm]	6'-10" [2083mm]	3'-0" [914mm]	4'-0" [1219mm]	3'-0" [914mm]	3'-10" [1088mm]	3000	1361	189	86
	7'-0" [2134mm]	7'-10" [2388mm]	3'-6" [1067mm]	4'-6" [1321mm]	3'-4" [1016mm]	4'-2" [1070mm]	3000	1361	205	93
	8'-0" [2439mm]	8'-10" [2692mm]	4'-0" [1219mm]	5'-0" [1524mm]	4'-0" [1219mm]	4'-10" [1473mm]	3000	1361	215	98
	9'-0" [2743mm]	9'-10" [2897mm]	4'-6" [1321mm]	5'-6" [1676mm]	4'-6" [1321mm]	5'-4" [1524mm]	3000	1361	225	102
	10'-0" [3048mm]	10'-10" [3201mm]	5'-0" [1524mm]	6'-0" [1829mm]	5'-0" [1524mm]	5'-10" [1778mm]	3000	1361	246	112
	11'-0" [3353mm]	11'-10" [3607mm]	5'-6" [1676mm]	6'-6" [1981mm]	5'-6" [1676mm]	6'-4" [1930mm]	3000	1361	266	121
	12'-0" [3658mm]	12'-10" [3912mm]	6'-0" [1829mm]	7'-0" [2134mm]	6'-0" [1829mm]	6'-10" [2083mm]	2650	1202	276	125
6' BRIDGE BEAM	13'-0" [3962mm]	13'-10" [4216mm]	6'-6" [1981mm]	7'-6" [2338mm]	6'-6" [1981mm]	7'-4" [2238mm]	2000	907	307	139
	14'-0" [4267mm]	14'-10" [4521mm]	7'-0" [2134mm]	8'-0" [2439mm]	7'-0" [2134mm]	8'-10" [2692mm]	2212	1003	317	144
	15'-0" [4572mm]	15'-10" [4826mm]	7'-6" [2338mm]	8'-6" [2592mm]	7'-6" [2338mm]	8'-6" [2592mm]	1937	879	511	232
	16'-0" [4877mm]	16'-10" [5131mm]	8'-0" [2439mm]	9'-0" [2743mm]	8'-0" [2439mm]	9'-10" [2997mm]	1705	773	526	239
8' BRIDGE BEAM	17'-0" [5182mm]	17'-10" [5436mm]	8'-6" [2592mm]	9'-6" [2897mm]	8'-6" [2592mm]	9'-6" [2897mm]	1508	684	570	259
	18'-0" [5487mm]	18'-10" [5741mm]	9'-0" [2743mm]	10'-0" [3048mm]	9'-0" [2743mm]	10'-10" [3302mm]	1338	607	600	272
	19'-0" [5792mm]	19'-10" [6046mm]	9'-6" [2897mm]	10'-6" [3252mm]	9'-6" [2897mm]	10'-6" [3252mm]				

The above table is based on 1/550 deflection ratio.



Application

Unified overhanging bridge cranes are designed for the suspension of portable spotweld guns, power tools, balancers, hoists, fixtures etc. and other loads not exceeding recommended rated loads. See next page for rated loads of various overhangs.

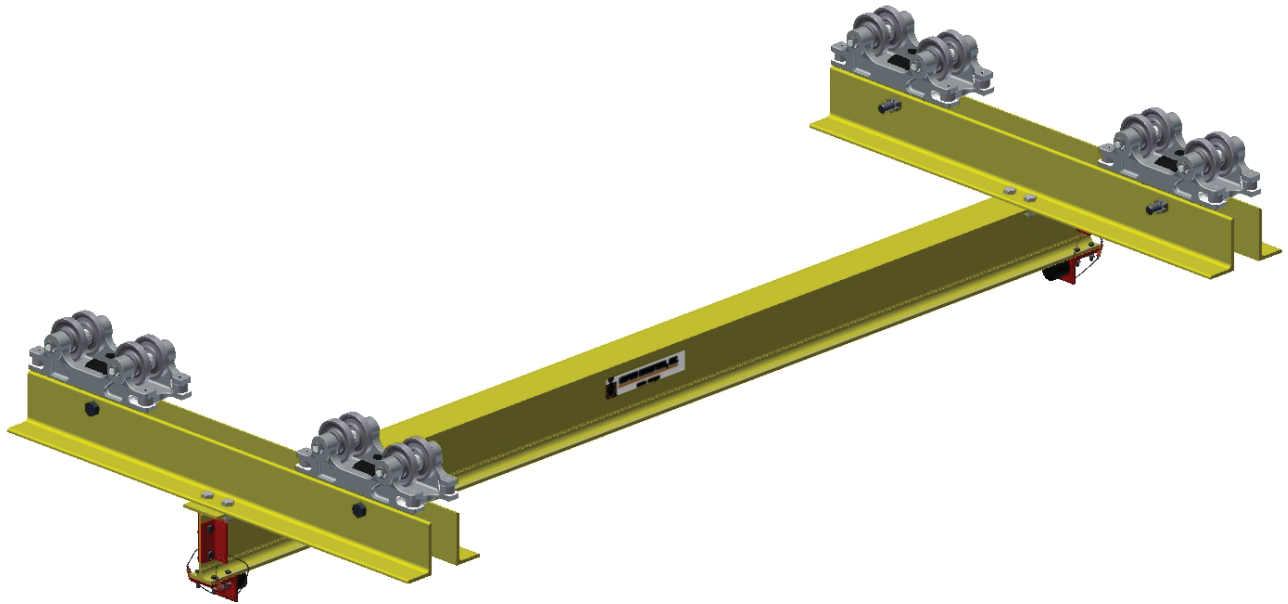
Specifications

Unified overhanging bridge cranes consist of two end truck assemblies, mounted with two MBC-1000 trolleys without kickup wheels and two MBC-1000 trolleys with kickup wheels on opposite end of overhang, supporting a bridge beam. The bridge beam is a compound section with a hardened and ground flat rail 3.25" in width. See next page for various spans and rated loads.

End trucks are mounted with trolleys for operation on either flat rail or S-Beam. End stops bolted to each end of the bridge beam complete the assembly. Spans of 10 feet (3m) or more have diagonal bracing from bridge beam to end trucks.

Options

- Bridge beam overhang opposite of regular overhang to suit your requirements
- Standard redundant end stops



Application

Unified heavy load bridge cranes are designed for the suspension of balancers, hoists, fixtures, heavy portable tools etc. and other heavy loads not exceeding 8000 lbs. (3629kg)

Specifications

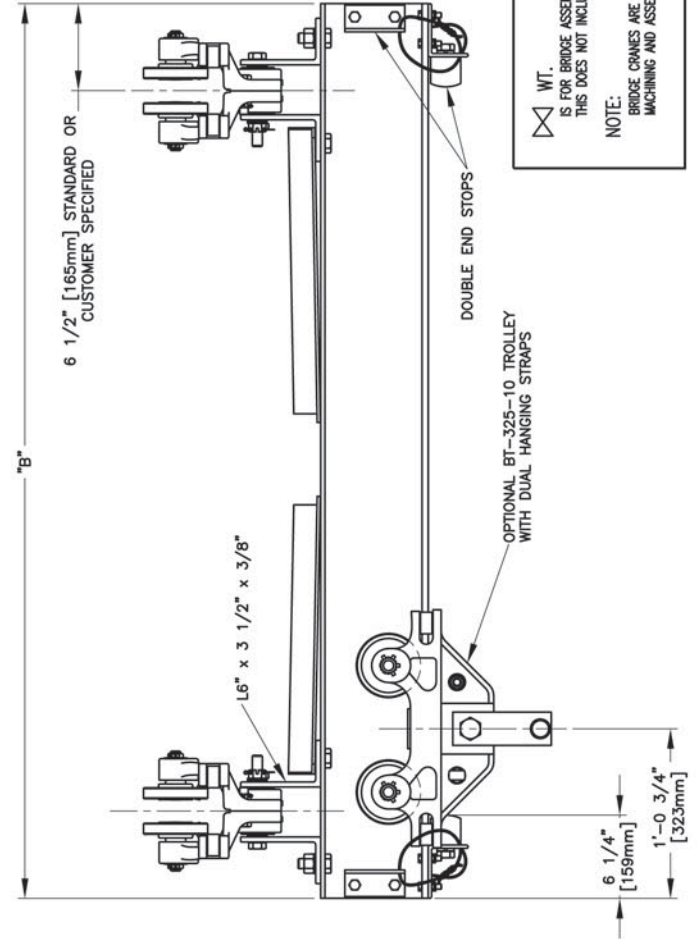
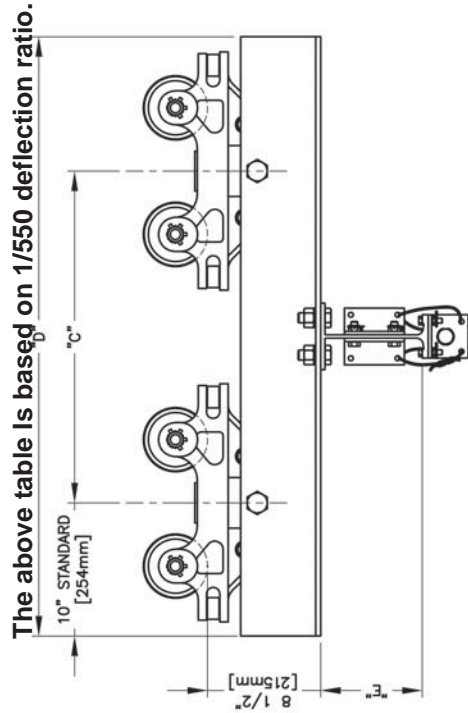
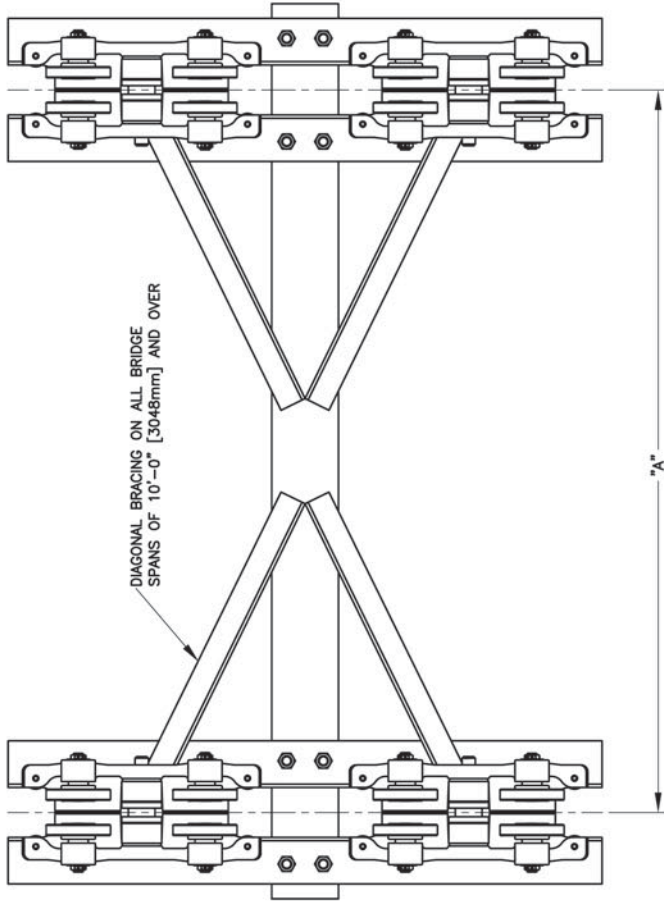
Unified heavy load bridge cranes consist of two end truck assemblies, mounted with BT- 325-10, supporting a bridge beam. The bridge beam is either 8" or 8 1/2" in height with a hardened and ground flat track 3.25" in width. (See trolley section for trolley specifications). End trucks are mounted with trolleys for operation on either flat rail or S-beam. Bolted end stops with neoprene bumpers complete the assembly.

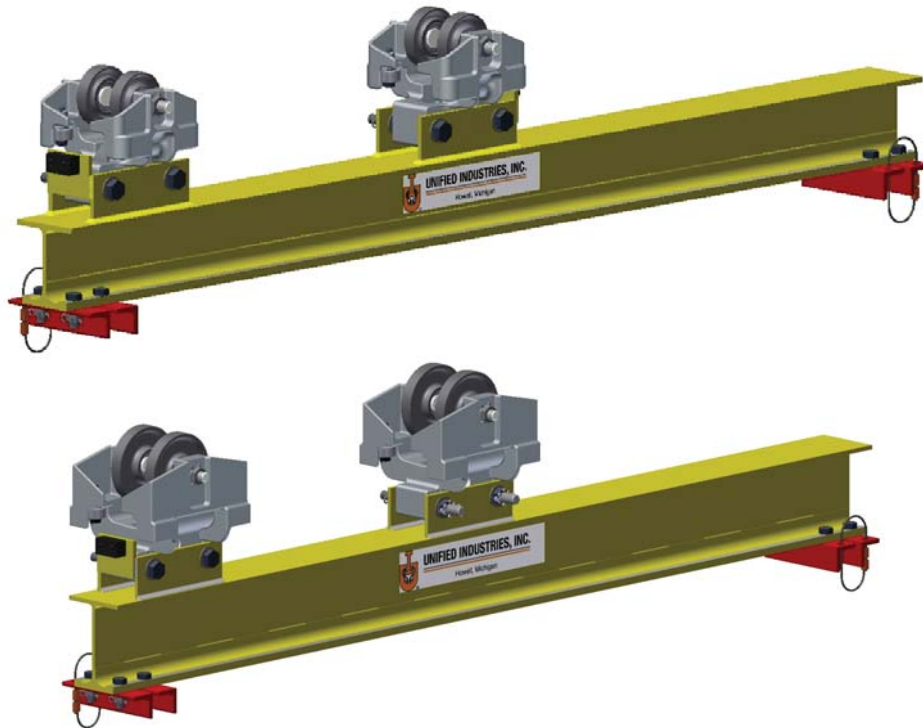
Spans of 10 ft (3m) or more have diagonal bracing from bridge beam to end trucks.

Options

- Bridge beam overhang to your specifications
- Counter thrust wheels can be furnished on request when suspended load must be extended beyond bridge span
- 10" bridge beam with hardened and ground flat rail 3.25" in width
- Standard redundant end stops

HEAVY LOAD BRIDGE CRANE ASSEMBLY									
BRIDGE			END TRUCK			RATED LOAD		WEIGHT COMPLETE	
SPAN		OVERALL	WHEEL BASE		OVERALL	Lb	kg	Lb	kg
"A" (mm)	"B" (mm)	"C" (mm)	"D" (mm)	"E" (mm)	"F" (mm)				
5'-0 (1524.0)	6'-1 (1854.2)	2'-0 (609.6)	3'-8 (1117.6)					461	209
6'-0 (1828.8)	7'-1 (2159.0)	2'-6 (762.0)	4'-2 (1270.0)					477	216
7'-0 (2133.6)	8'-1 (2463.8)	3'-0 (914.4)	4'-8 (1422.4)					516	234
8'-0 (2438.4)	9'-1 (2768.6)	3'-4 (1016.0)	5'-0 (1524.0)					532	241
9'-0 (2743.2)	10'-1 (3073.4)	4'-0 (1219.2)	5'-8 (1727.2)					572	259
10'-0 (3048.0)	11'-1 (3378.2)	4'-6 (1371.6)	6'-2 (1879.6)					635	288
11'-0 (3352.8)	12'-1 (3683.0)	5'-0 (1524.0)	6'-8 (2032.0)					652	296
12'-0 (3657.6)	13'-1 (3987.8)	5'-8 (1727.2)	7'-2 (2184.4)					698	317
13'-0 (3962.4)	14'-1 (4292.6)	6'-0 (1828.8)	7'-8 (2336.8)					719	326
14'-0 (4267.2)	15'-1 (4597.4)	6'-6 (1981.2)	8'-2 (2488.8)					758	344
15'-0 (4572.0)	16'-1 (4902.2)	7'-0 (2133.6)	8'-8 (2641.2)					774	351
16'-0 (4876.8)	17'-1 (5207.0)	7'-6 (2286.0)	9'-2 (2793.6)					811	368
17'-0 (5181.6)	18'-1 (5511.8)	8'-0 (2438.4)	9'-8 (2946.0)					831	377
18'-0 (5486.4)	19'-1 (5816.6)	8'-6 (2565.6)	10'-2 (3076.0)					883	401
19'-0 (5791.2)	20'-1 (6121.4)	9'-0 (2718.0)	10'-8 (3228.0)					903	410
20'-0 (6096.0)	21'-1 (6426.2)	9'-6 (2895.6)	11'-2 (3380.0)					973	441
		10'-0 (3048.0)	11'-8 (3532.0)					1388	993
		10'-6 (3190.8)	12'-4 (3684.0)					1254	1036





Application

Unified light and medium duty telescoping units are designed for the suspension of portable spotweld guns, power tools balancers, hoists fixtures etc. and other light or medium weight loads not exceeding recommended rated loads. See next page for rated loads of various extensions.

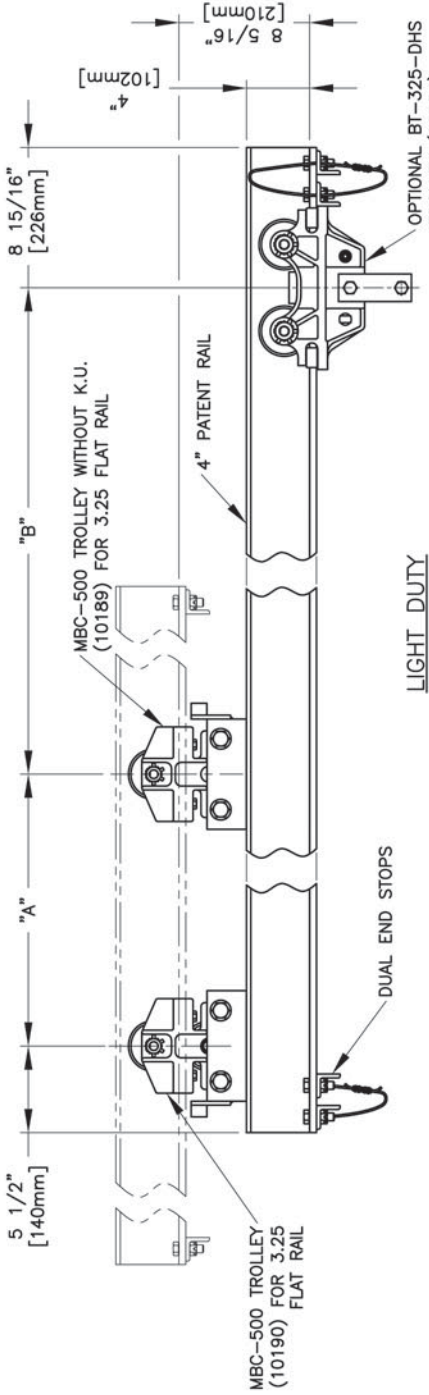
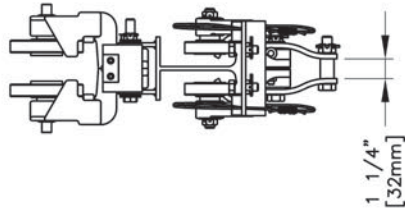
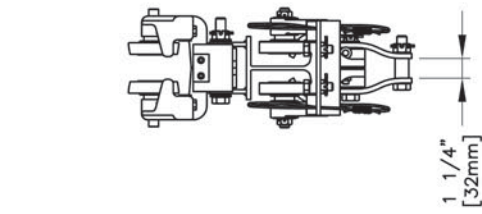
Specifications

Unified light and medium duty telescoping units consist of one two-wheel and one three-wheel trolley or carrier head opposite of overhang, mounted to a transfer beam. The medium duty units have a compound section, with a hardened and ground flat track 3.25" in width. (See trolley section for trolley or carrier head specifications).

Transfer beam is mounted with trolleys or carrier heads for operation on either flat rail or S-Beam. End stops bolted to each end of transfer beam complete the assembly.

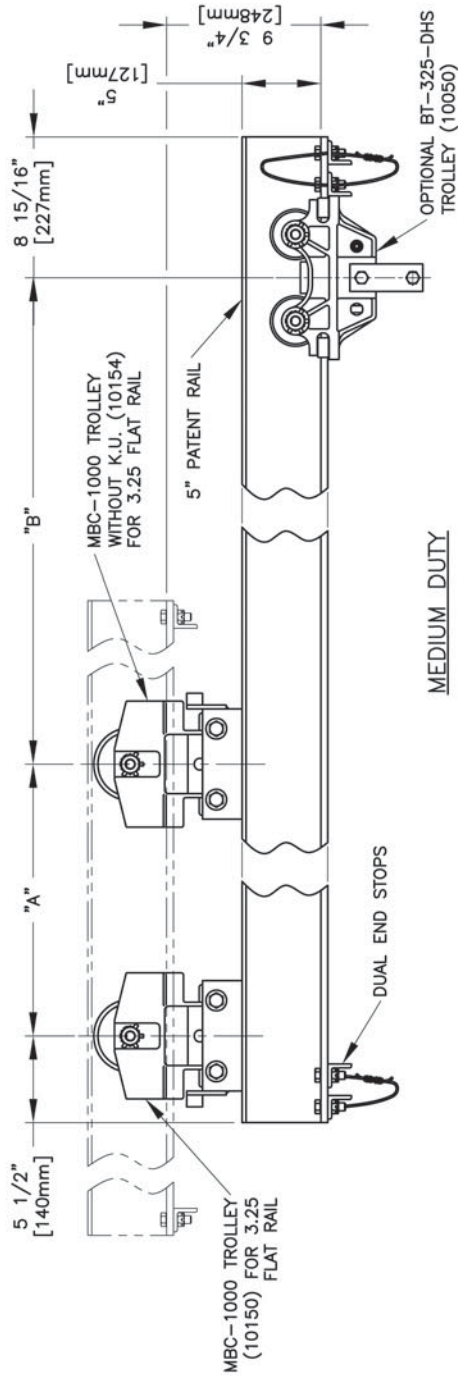
Options

- Transfer beam overhang opposite of extension to your specifications
- Standard redundant end stops



LIGHT DUTY

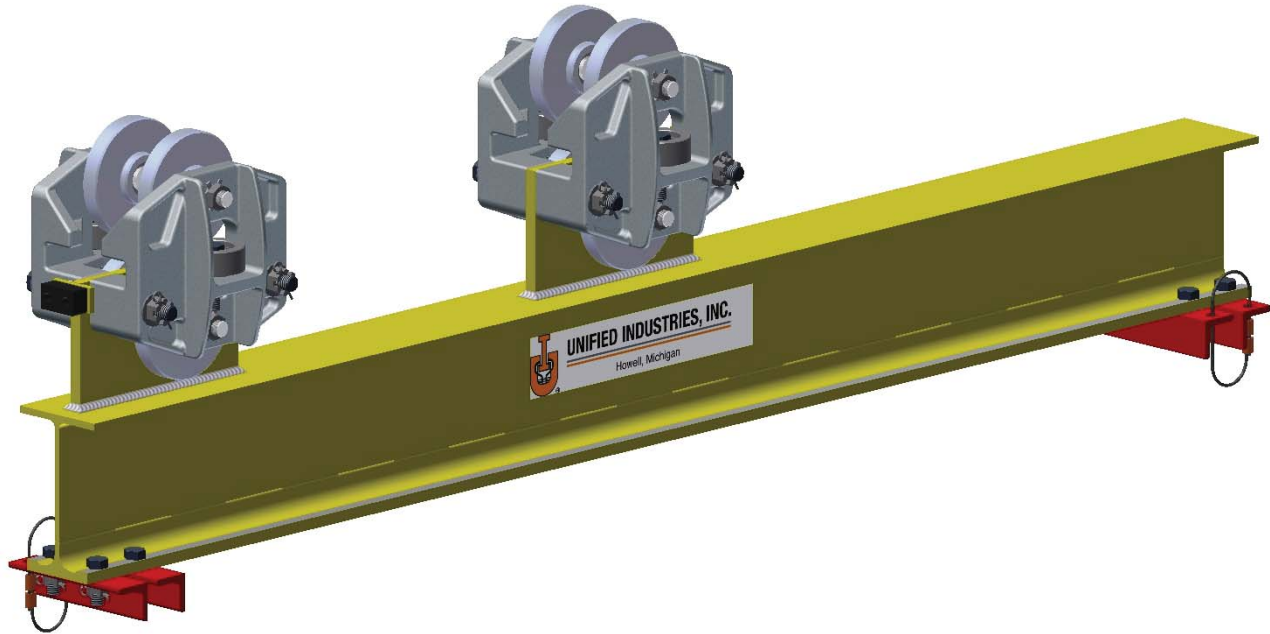
"A"		"B"						
		12" [304 mm]	24" [609 mm]	36" [914 mm]	48" [1219 mm]	LBs	Kgs	
18" [457 mm]	300	136.3	210	95.4	165	75	135	61.3
24" [609 mm]	330	150	250	113.6	200	90.9	165	75
30" [762 mm]	355	161.3	275	125	225	102.2	190	86.3



MEDIUM DUTY

"A"		"B"						
		12" [304 mm]	24" [609 mm]	36" [914 mm]	48" [1219 mm]	LBs	Kgs	
18" [457 mm]	600	272.7	425	193.1	330	150	270	122.7
24" [609 mm]	665	302.2	500	227.2	400	181.8	330	150
30" [762 mm]	710	321.7	555	252.2	450	204.5	380	172.7

The above tables are based on 1/550 deflection ratio.



Application

Unified standard duty telescoping self-equalizing tandem trolley units are designed for the suspension of portable spotweld guns, power tools, balancers, hoists, fixtures, etc., and other loads not exceeding recommended rated loads. See next page for rated loads of various extensions.

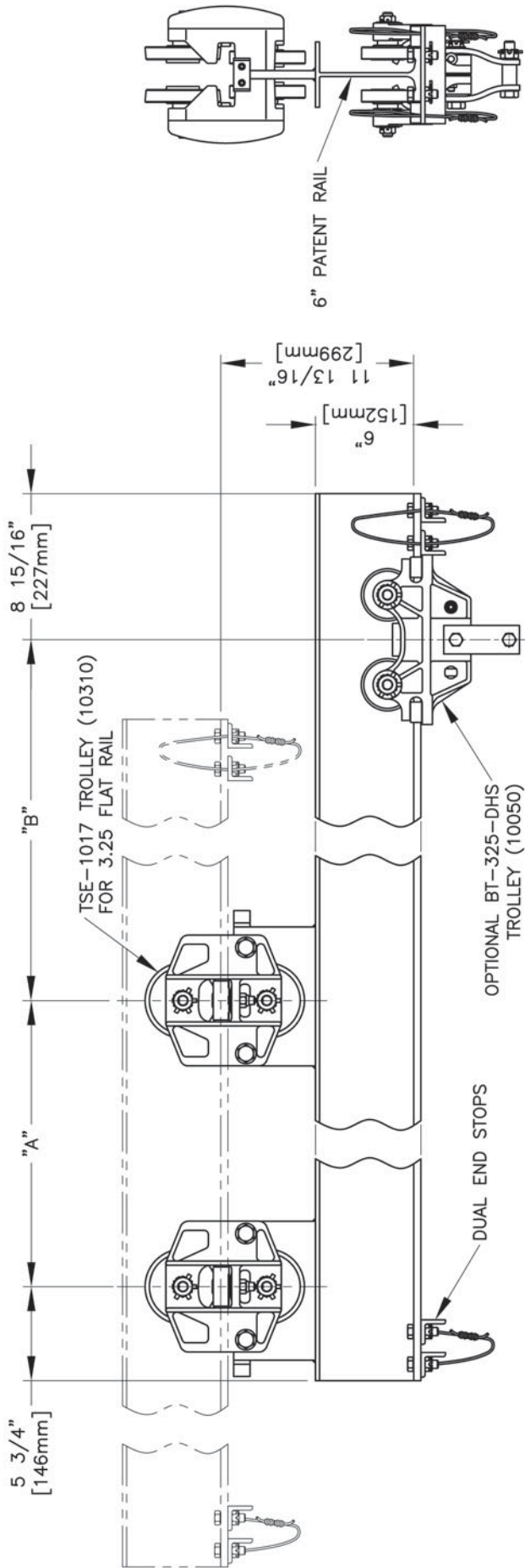
Specifications

Unified standard duty telescoping units consist of two tandem trolleys welded to a transfer beam. The transfer beam is a compound section 6" in height with a hardened and ground flat rail 3.25" in width. (See trolley section for trolley specifications).

Transfer beam is mounted with tandem trolleys for operation on either flat rail or S-Beam. End stops bolted to each end of transfer beam complete the assembly.

Options

- Transfer beam overhang opposite of extension to your specifications ("C" dimension).
- Standard redundant end stops

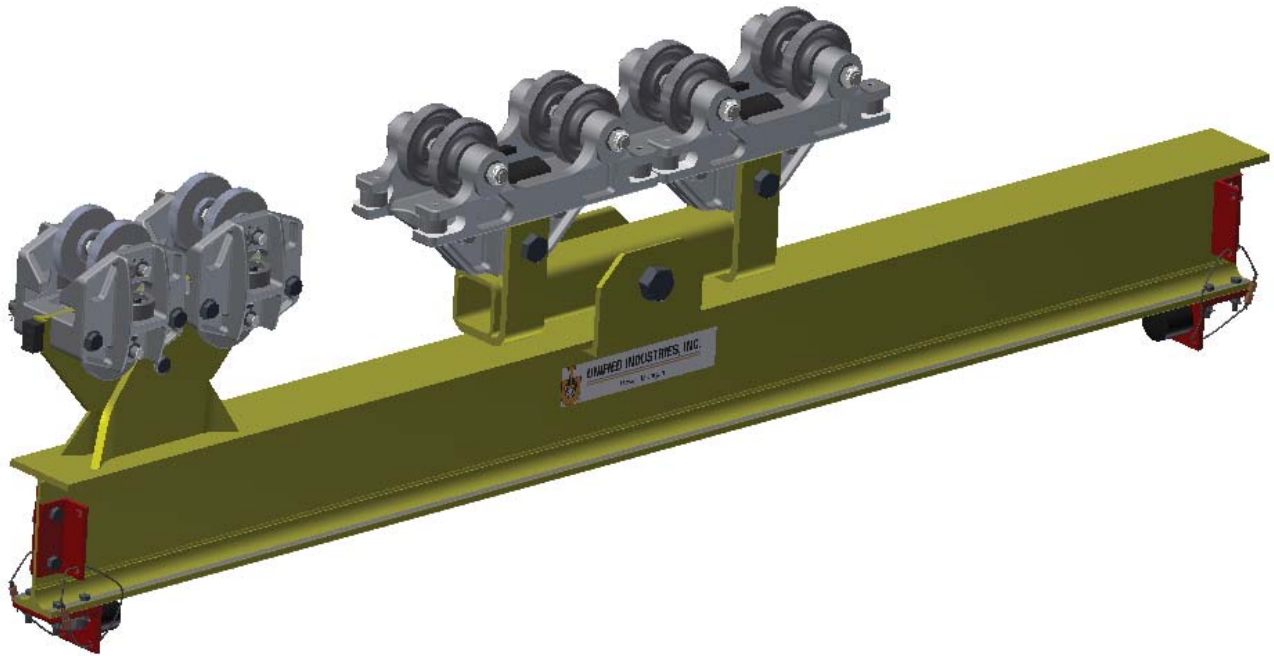


TROLLEY SPECIFICATIONS
 RATED LOAD: 2,500 LBS. (1120 Kgs)
 WEIGHT: 31 LBS. (14 Kgs)
 BODY: HIGH TENSILE ALMAG
 WHEEL: 4 5/8" [117] DIA.
 STUD: 5/8" [15] DIA.

NOTE:
 WHEN ORDERING SPECIFY EXACT WIDTH OF RUNNING SURFACE FLANGE.
 1. 3.25" [82.6] FOR STD. FLAT RAIL AND 3.33" [84.6] FLAT RAIL.
 2. 3.33" [84.6] FOR S6 BEAM

DIMENSION "B" EXTENDED LOAD RATINGS IN POUNDS & KILOGRAMS												
"A"	12"	304 mm	24"	609 mm	36"	914 mm	48"	1219 mm	60"	1524 mm	72"	1828 mm
18	457	1500 LBS	681.8 KGS	1070 LBS	486.3 KGS	830 LBS	377.2 KGS	309 KGS	575 LBS	261.3 KGS	500 LBS	227.2 KGS
24	609	1665 LBS	756.8 KGS	1250 LBS	568.1 KGS	1000 LBS	454.5 KGS	377.2 KGS	710 LBS	322.7 KGS	585 LBS	265.9 KGS
30	762	1785 LBS	811.3 KGS	1385 LBS	629.5 KGS	1135 LBS	515.9 KGS	436.3 KGS	750 LBS	340.9 KGS	550 LBS	250 KGS
36	914	1875 LBS	852.2 KGS	1500 LBS	681.8 KGS	1250 LBS	568.1 KGS	454.5 KGS	700 LBS	318.1 KGS	520 LBS	236.3 KGS
42	1066	1940 LBS	881.8 KGS	1590 LBS	722.7 KGS	1345 LBS	611.3 KGS	422.7 KGS	660 LBS	300 KGS	495 LBS	225 KGS
48	1219	2000 LBS	909 KGS	1665 LBS	756.8 KGS	1330 LBS	604.5 KGS	397.7 KGS	625 LBS	284 KGS	470 LBS	213.6 KGS

The above table is based on 1/550 deflection ratio.



Application

Unified heavy duty telescoping self-equalizing tandem trolley units are designed for the suspension of portable spotweld guns, power tools, balancers, hoists, fixtures, etc., and other loads not exceeding recommended rated loads. See next page for rated loads of various extensions.

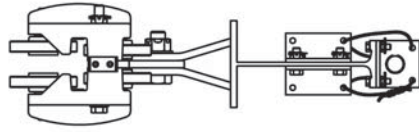
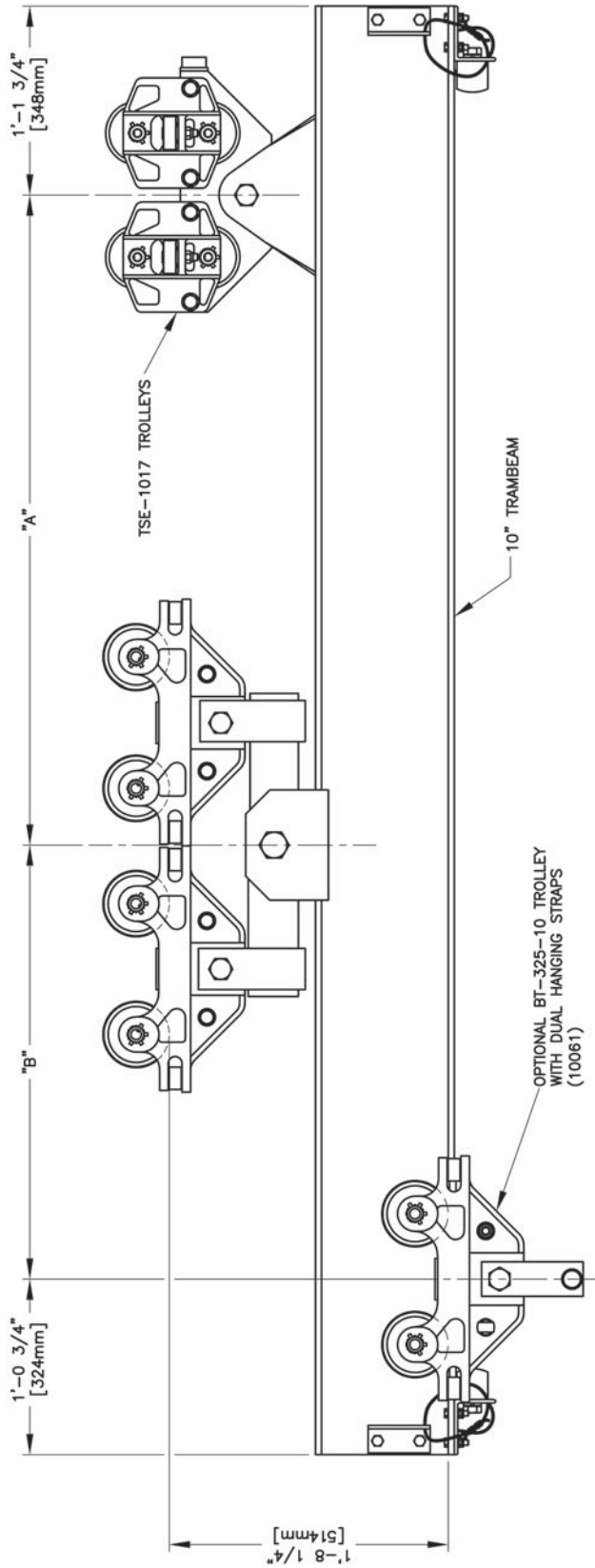
Specifications

Unified heavy duty telescoping units consist of two tandem trolleys welded to a transfer beam.

Transfer beam is mounted with tandem trolleys for operation on either flat rail or S-Beam. End stops bolted to each end of transfer beam complete the assembly.

Options

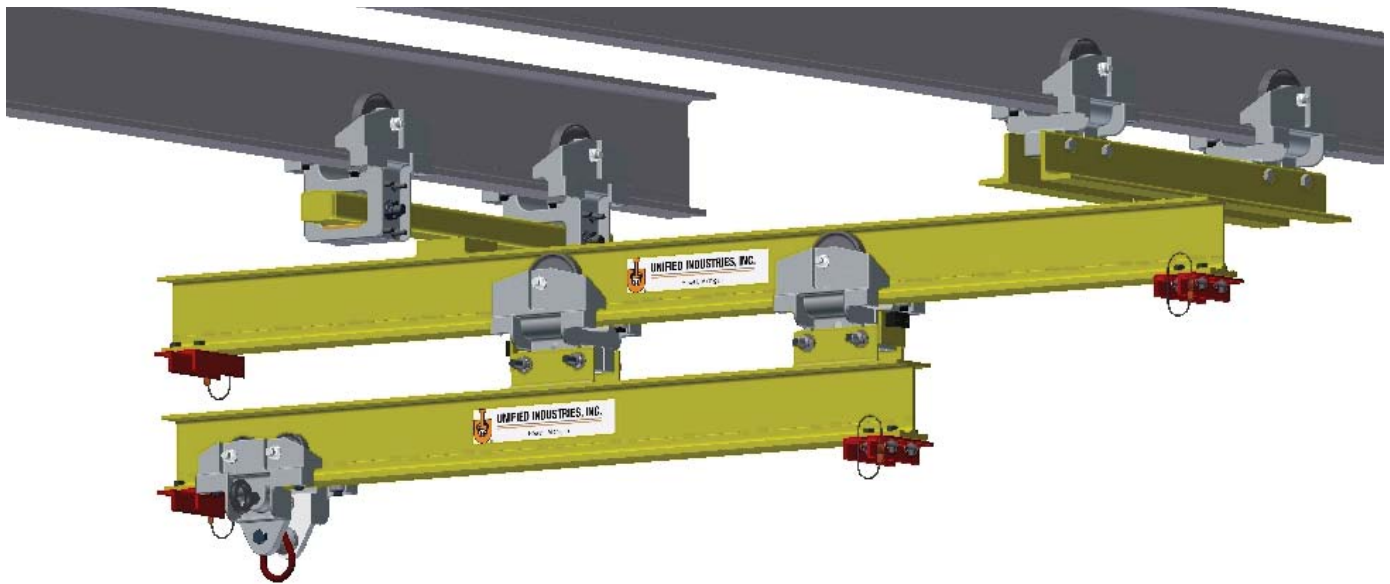
- Transfer beam overhang opposite of extension to your specifications ("C" dimension).



"A"		"B" LOAD IN POUNDS AND KILOGRAMS					
BEAM SIZE	"A"	36"	48"	60"	72"	1828 mm	
10"	36"	4000 LBS	3425 LBS	3000 LBS	2225 LBS	1011.3 Kg	
	48"	4570 LBS	3750 LBS	2660 LBS	2000 LBS	909 Kg	
	60"	5000 LBS	4440 LBS	3650 LBS	2760 LBS	1254.5 Kg	
	72"	5330 LBS	4550 LBS	3330 LBS	2540 LBS	1154.5 Kg	
	914 mm	1818.1 Kg	1556.8 Kg	1363.6 Kg	1011.3 Kg		
	1219 mm	2077.2 Kg	1704.5 Kg	1209 Kg	909 Kg		
	1524 mm	2272.7 Kg	2018.1 Kg	1659 Kg	760 Kg		
	1828 mm	2422.7 Kg	2086.1 Kg	1513.6 Kg	688 Kg		

FOR ADDITIONAL LOADS AND DIMENSIONS, CONSULT FACTORY.

The above table is based on 1/550 deflection ratio.



Unified bridge crane and telescope unit combination for extending loads beyond normal span of runway.

Unified self-aligning carrier SAC-1020-1 used for runways that are not parallel.

Unified anti kick-up carrier MBC-1000-3 for opposing counter thrust of extended load.



UNIFIED INDUSTRIES, INC.

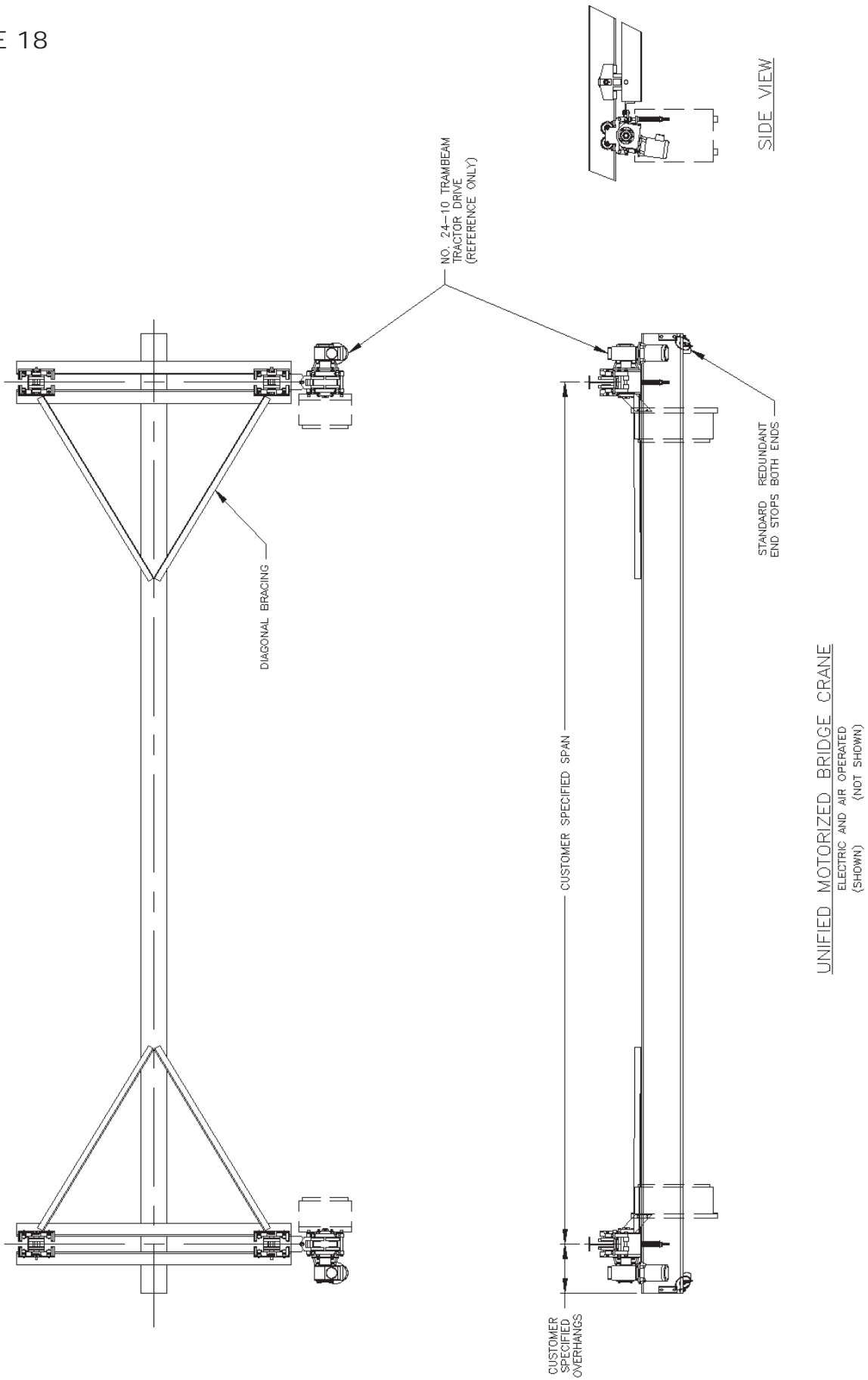
A Columbus McKinnon Company

Phone: 517-546-3220

Email: sales@unified-ind.com

MOTORIZED BRIDGE CRANES (AIR AND ELECTRIC)





CAUTION

This bridge crane has a safe load rating, which has been clearly marked on both sides by the manufacturer. The total weight of the suspended load should never exceed 125% of this limit. The weight of all handling devices such as buckets, magnets, grabs, balancers, hoists, weldguns, etc. must be included as a part of the suspended load. The weight of such devices should therefore be determined and clearly marked.

Consideration should be given when installing hoisting devices. Load ratings for such devices may exceed the load rating of the bridge crane.

The operator should inspect this bridge crane for loose bolts and worn, cracked or distorted parts prior to use (inspection should include all handling devices and mounting equipment). Defective parts should be replaced with manufacturer-approved parts before use of bridge crane is resumed.

This bridge crane conforms to the safety standards of the U.S. Occupational Safety and Health Administration (OSHA). Any alteration of its structure or change in its rated load capacity may render null and void any manufacturer's warranties, expressed or implied.

***All dimensions are reference only
and need to be verified with factory.**

