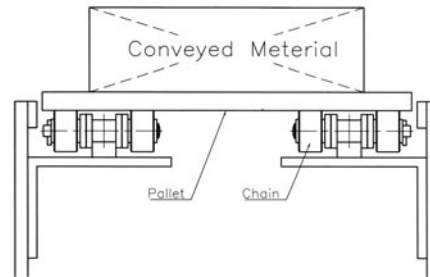


Side Roller Chain



Dong Bo chain manufactures wide range of side roller chains for every application: Hardened steel rollers for automotive application and resin rollers for quite operation in electronics industry

Side Roller Chain Series

Type of Chain		Roller Material of Basic Chain	Top Roller Material	Variations of Base Chain
Single Pitch Type		S* & SS*	S, SS & P*	Stainless Steel, Nickel-plated, Zinc galvanizing, Chromium plating series
Double Pitch Type	S-Roller	S & SS	S, SS & P	
	R-Roller	P	P	

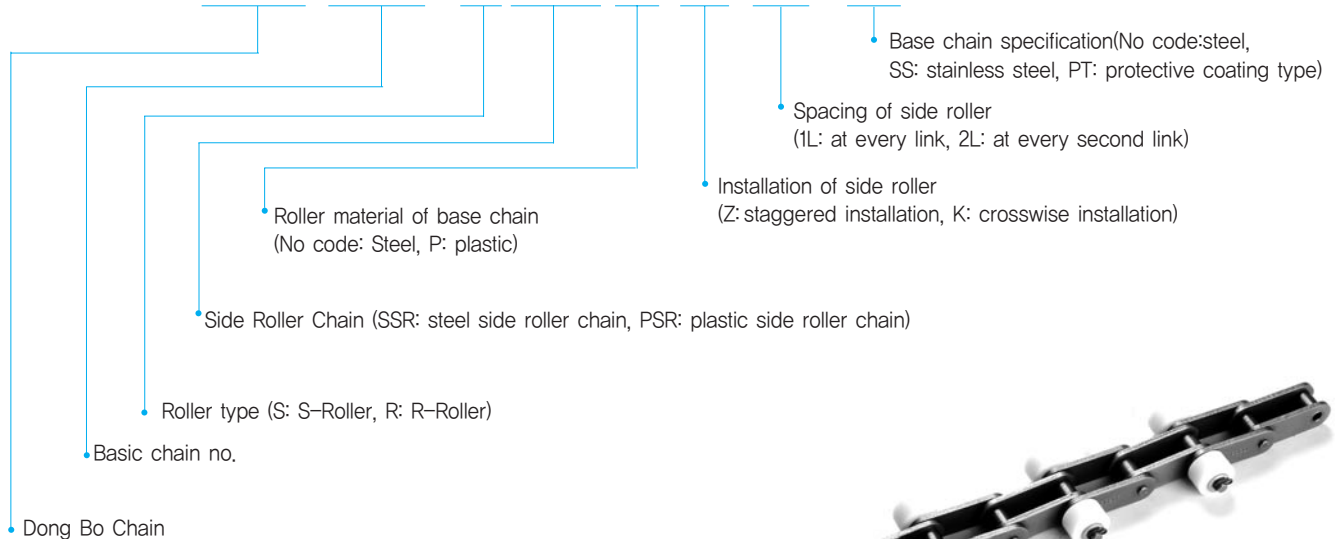
*S=steel, SS=Stainless Steel, P=Plastic

-Advantages of Steel Roller Type: higher max. allowable Load and approval working temperature (-10 °C~150 °C)

-Advantages of Plastic Resin Roller Type: light weight, less noise

Designation of Side Roller Chain

DBC 2040 S SSR -P -Z -2L -SS



Plastic Side Roller chain

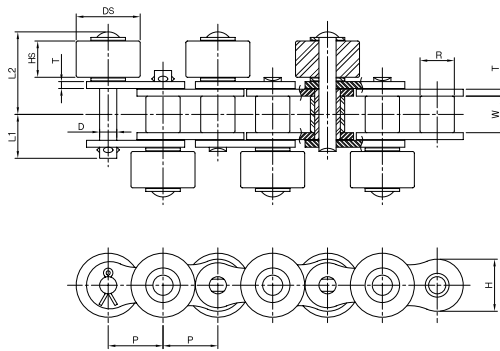


Side Roller Chain

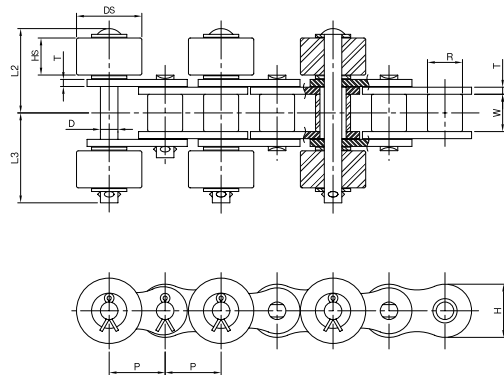
Single Pitch Type



Z- Type



K- Type



unit : mm

Dong BoChain No.		Pitch P	Roller Dia R	Inner Width W	Plate		Pin			Side Roller		Approx.Weight(kg/m)		
Basic chain no	Type of side roller				T	H	D	L1	L2	L3	DS	HS	PSR	SSR
DBC 40	PSR*	12.70	7.92	7.95	1.5	12.0	3.97	9.65	19.75	19.75	15.88	7.8	0.95	1.7
	SSR*													
DBC 50	PSR	15.875	10.16	9.53	2.0	15.0	5.09	11.9	21.9	23.8	19.05	9.4	1.5	2.5
	SSR													
DBC 60	PSR	19.05	11.91	12.70	2.4	18.1	5.96	15.25	28.75	31.25	22.23	12.6	2.2	3.7
	SSR													
DBC 80	PSR	25.40	15.88	15.88	3.2	24.1	7.93	19.25	35.10	39.0	28.58	15.8	3.6	6.0
	SSR													
DBC100	PSR	31.75	19.05	19.05	4.0	30.1	9.54	22.85	42.55	46.35	39.69	19.0	5.6	10.1
	SSR													

*PSR=Plastic side Roller Type, *SSR=Steel side Roller Type

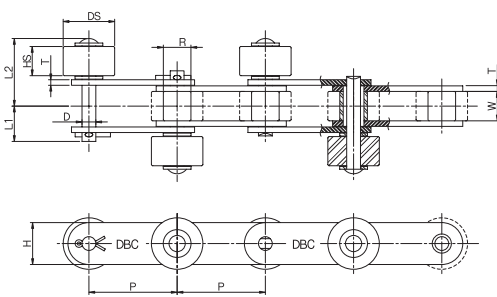
Note) The drawing shows the standard 'S' Roller (roller at main chain) drawn in solid lines and the oversize 'R' Roller in dotted lines

Side Roller Chain

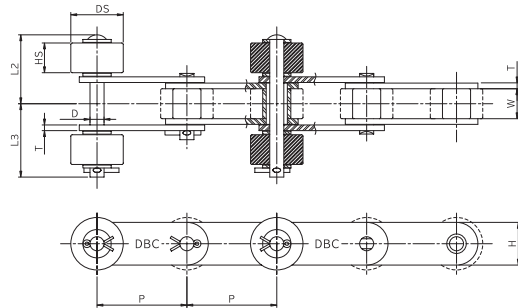
Double Pitch Type



Z- Type



K- Type



DONG BO Chain No.		Pitch	Roller Dia		Inner width	Plate		Pin			Side Roller		Approx Weight		
Basic chain No	Type of side roller		S	R		T	H	D	L1	L2	L3	DS	HS	A*	B*

unit : mm

DBC 2040*	SSR	25.40	7.92	-	7.95	1.5	12.0	3.97	9.65	18.9	18.2	15.88	7.8	0.7	1.1	0.9
DBC 2042*	PSR	25.40	-	15.88	7.95	1.5	12.0	3.97	9.65	18.9	18.2	15.88	7.8	0.7	1.1	0.9
DBC 2050	SSR	31.75	10.16	-	9.53	2.0	15.0	5.09	11.9	22.5	23.2	19.05	9.4	1.1	1.6	1.3
DBC 2052	PSR	31.75	-	19.05	9.53	2.0	15.0	5.09	11.9	22.5	23.2	19.05	9.4	1.1	1.6	1.3
DBC 2060	SSR	38.10	11.91	-	12.70	3.2	18.1	5.96	16.95	30.9	32.70	22.23	12.6	1.8	2.6	2.0
DBC 2062	PSR	38.10	-	22.23	12.70	3.2	18.1	5.96	16.95	30.9	32.70	22.23	12.6	1.8	2.6	2.0
DBC 2080	SSR	50.80	15.88	-	15.88	4.0	24.1	7.93	20.95	36.95	42.35	28.58	15.8	3.2	4.3	-
DBC 2082	PSR	50.80	-	28.58	15.88	4.0	24.1	7.93	20.95	36.95	42.35	28.58	15.8	3.2	4.3	-
DBC 2100	SSR	63.50	19.05	-	19.05	4.8	30.1	9.54	24.5	44.20	47.3	39.69	19	4.8	7.0	-
DBC 2102	PSR	63.50	-	39.69	19.05	4.8	30.1	9.54	24.5	44.20	47.3	39.69	19	4.8	7.0	-

* 2040~ = standard 'S'-Roller Type, 2042~ = oversize 'R'-Roller Type

* A = steel roller chain with plastic side roller

* B = steel roller chain with steel side roller

* C = plastic roller chain with plastic side roller

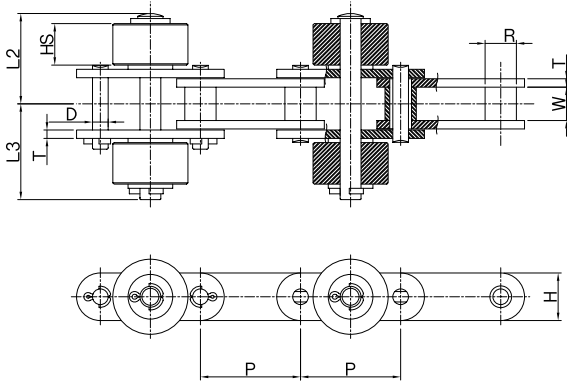
Note) 1. Plastic Side Roller Chain (R-Roller Type) are available in size 2040, 2050 and 2060

2. Weights are listed for Z-type at every link and K-type at every 2nd link.



Side Roller Chain

G-Hole Installation Type

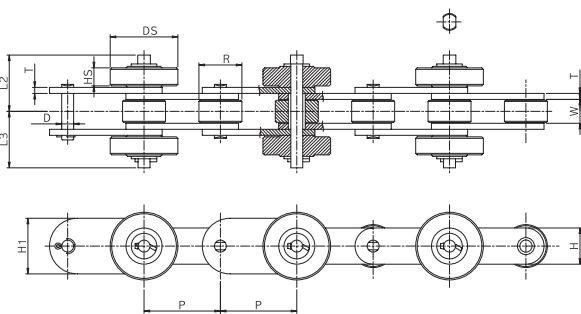


unit : mm

Dong Bo Chain No.	Pitch P	R-Roller R	Inner Width W	Plate		Pin			Side Roller		Approx.Weight (kg/m)	
				T	H	D	L2	L3	DS	HS	PSR*	SSR*
DBC 2040 PSR -GK	25.4	7.92	7.95	1.5	12	3.97	18.9	18.2	15.88	7.8	0.8	1.3
DBC 2050 PSR -GK	31.75	10.16	9.53	2	15	5.09	22.5	23.2	19.05	9.4	1.3	1.8
DBC 2060 PSR -GK	38.10	11.91	12.7	3.2	18.1	5.96	30.9	32.7	22.23	12.6	2	2.8
DBC 2080 PSR -GK	50.8	15.88	15.88	4	24.1	7.93	36.95	42.35	28.58	15.8	3.5	4.7

*PSR=Plastic Side Roller / SSR=Steel Side Roller

Guide Plate Type for Derailing Prevention



unit : mm

Dong Bo Chain No.	Pitch P	Roller Dia R	Inner Width W	Plate			Pin			Side Roller		Approx.Weight (kg/m)
				T	H	H1	D	L2	L3	DS	HS	
DBC 2080 SSR-TG	50.8	28.58	15.88	4	24.1	34	7.94	36.95	36.95	38.1	12.0	6.1
						37				45.0		
DBC 2100 SSR-TG	63.5	39.69	19.05	4.5	30.1	48	9.54	38.7	41.8	57.2	12.0	10.6
						60.0				60.0		

Note) When ordering, please indicate installation method (inner or outer plate installation) and spacing of guide plate.